

Sunspot Classifications & Solar Flare Prediction

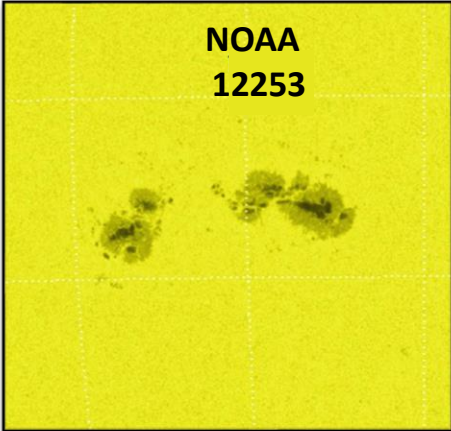
Does machine learning improve upon Poisson-based prediction models?

Aoife E. McCloskey¹, Peter T. Gallagher², D. Shaun Bloomfield³

DLR Institute for Solar-Terrestrial Physics¹ | Dublin Institute for Advanced Studies² | Northumbria University³



Contact: aoife.mccloskey@dlr.de



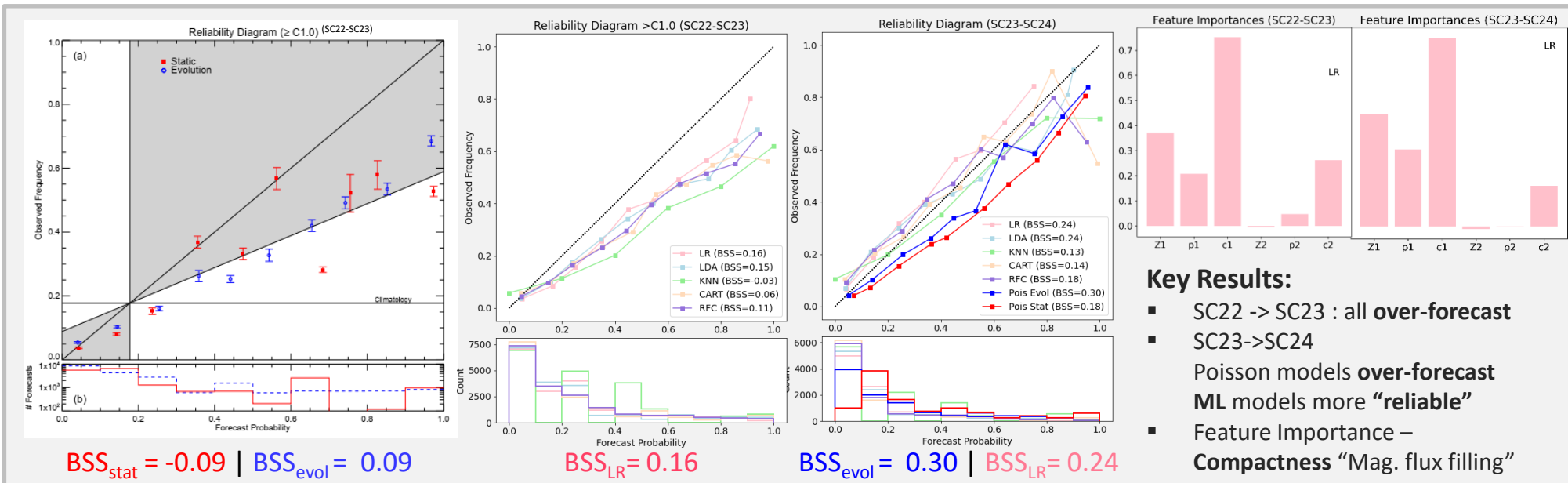
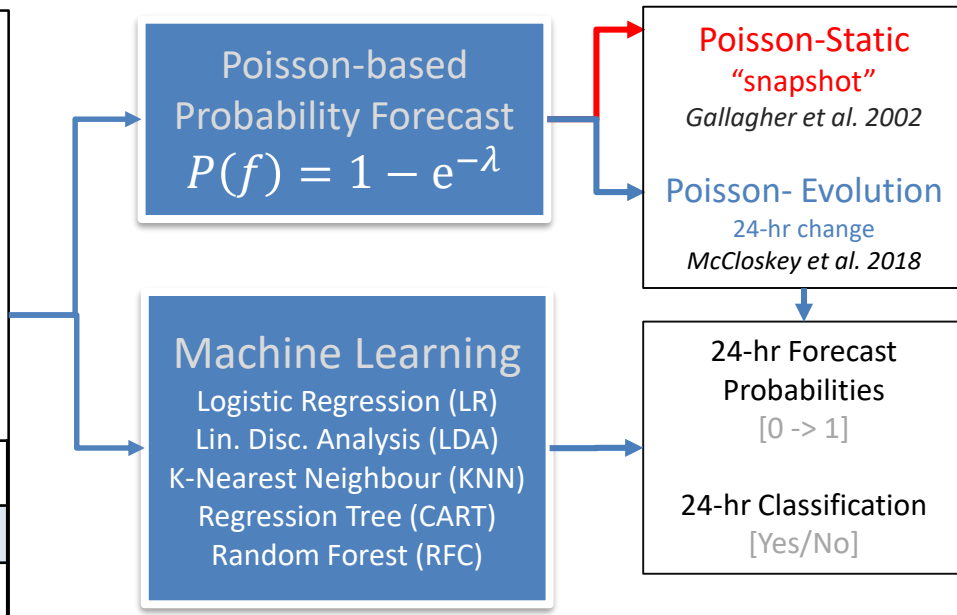
NOAA 12253

AR Database

Sources
 NOAA Solar Region Summary
 - Zpc, MtWil, Location, Area, ...
 NOAA Solar Event Reports
 - AR Flares (C-, M- & X-Class)

Time Range
 1988-2019 (SC22, 23 & 24)

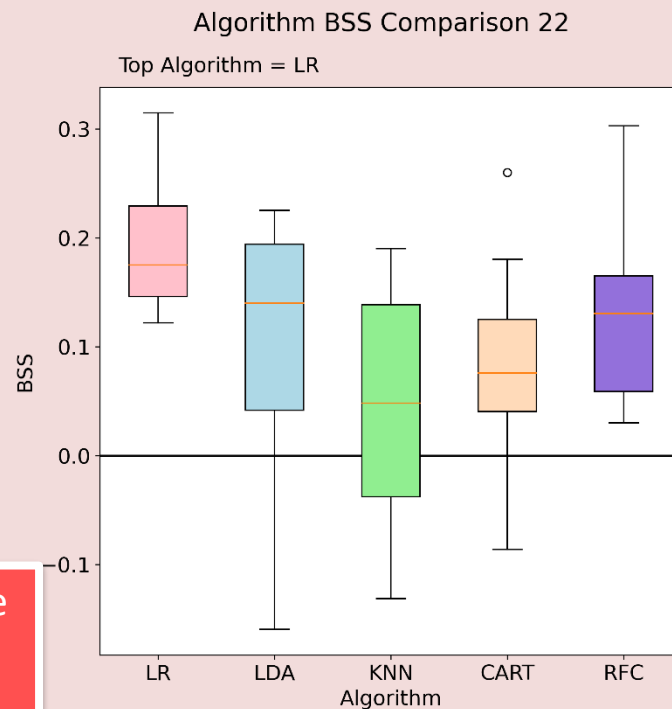
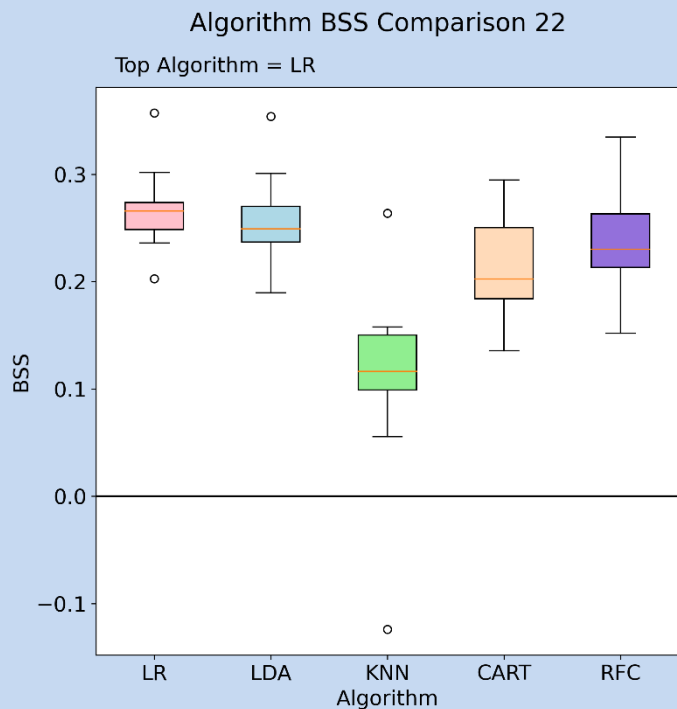
McIntosh Class (Zpc)			NOAA Active Regions		
Day 1	Day 2	Day 3	SC22	SC23	SC24
Dai	Eac	Ekc	2,708	3,063	1,763



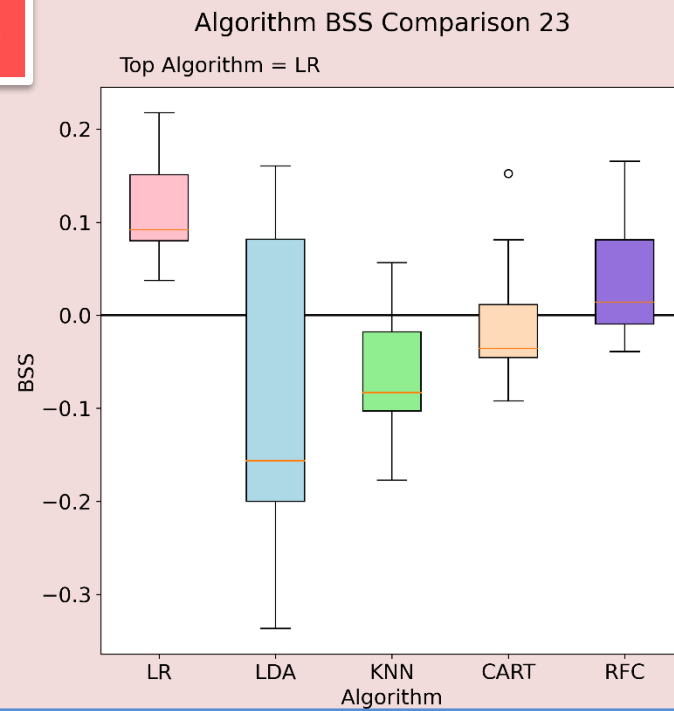
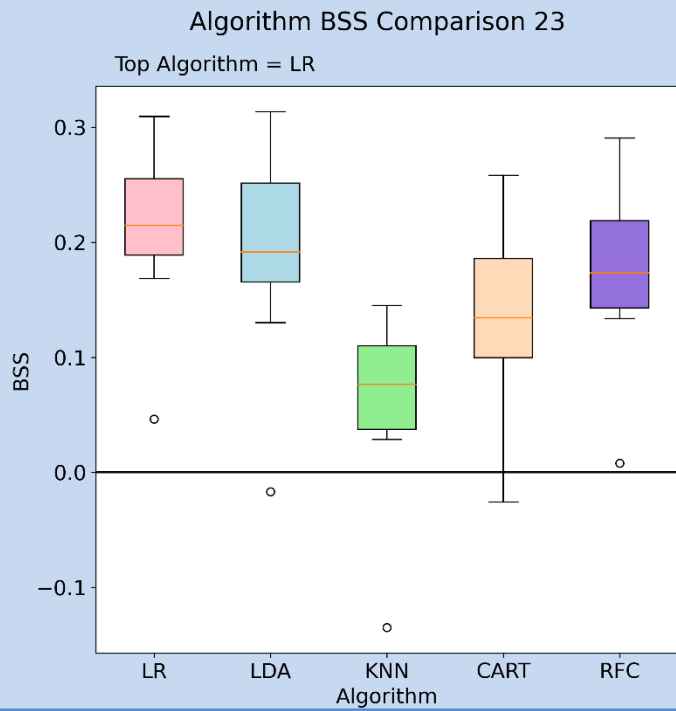
>C1.0 Flares

Brier Skill Scores

>M1.0 Flares



How well do the ML models perform probabilistically?

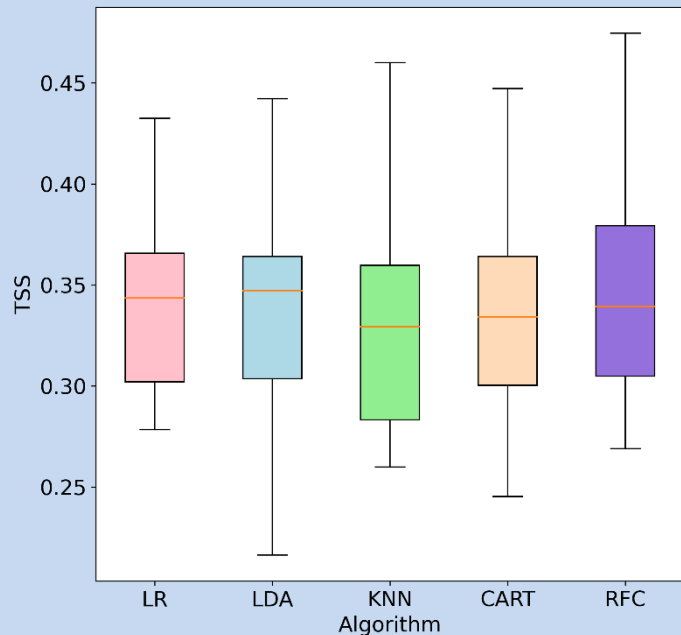


True Skill Statistic

>C1.0 Flares

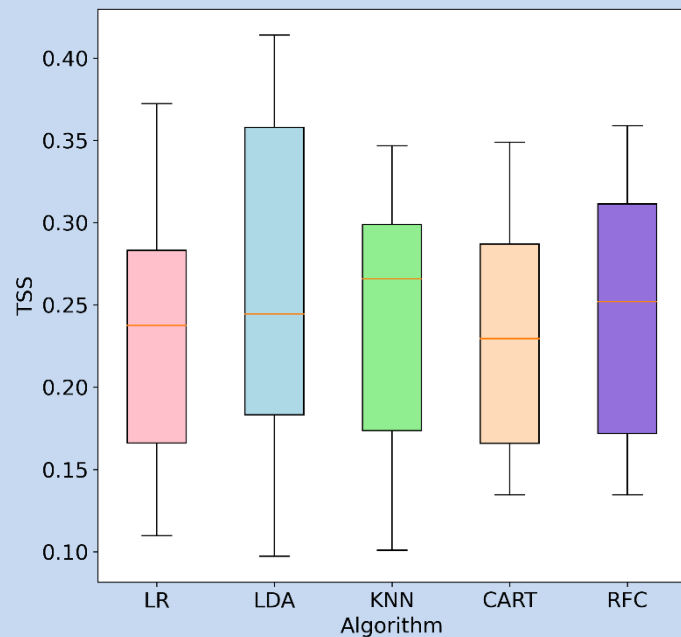
Algorithm TSS Comparison 22

Top Algorithm = RFC



Algorithm TSS Comparison 23

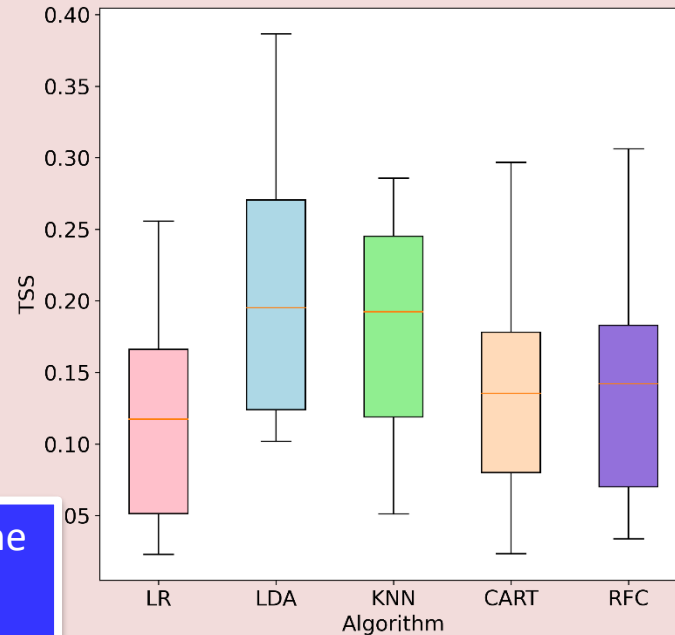
Top Algorithm = LDA



>M1.0 Flares

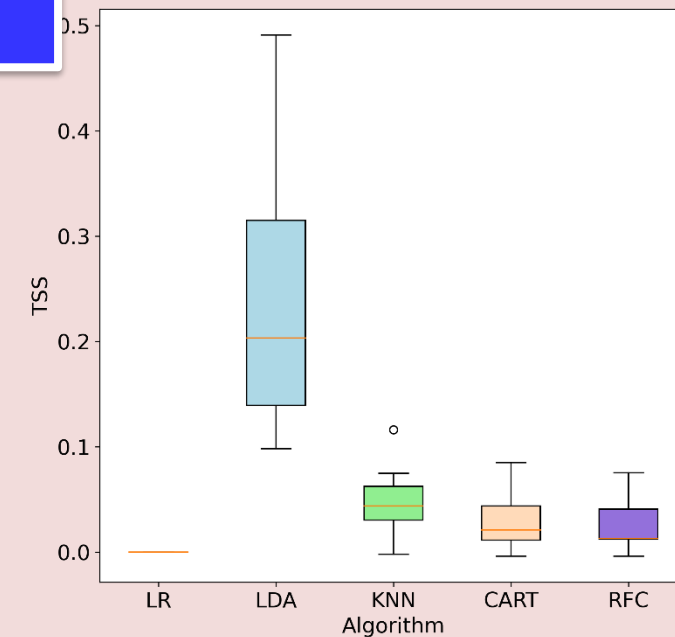
Algorithm TSS Comparison 22

Top Algorithm = LDA



Algorithm TSS Comparison 23

Top Algorithm = LDA

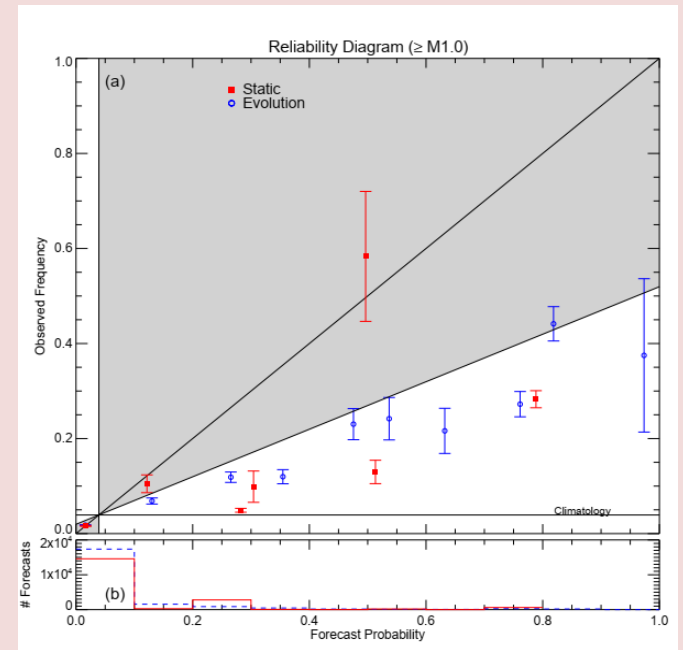
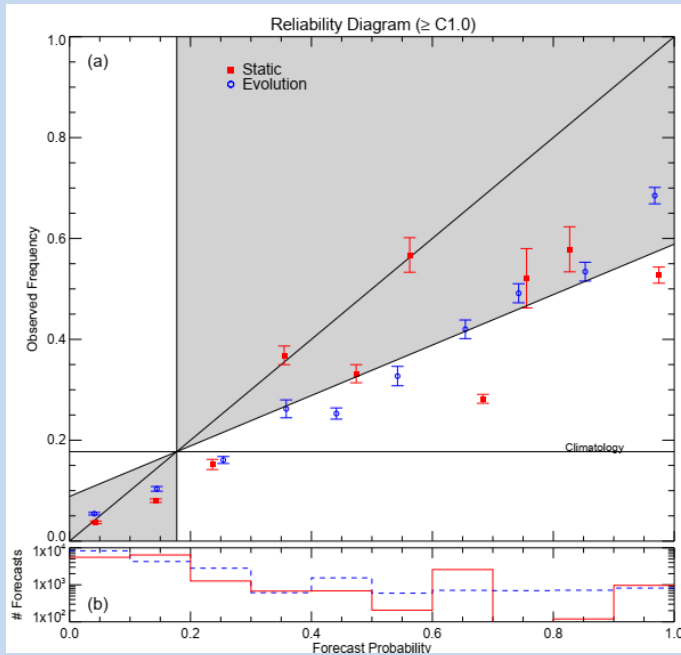


How well do the ML models perform classification?
[Yes/No]

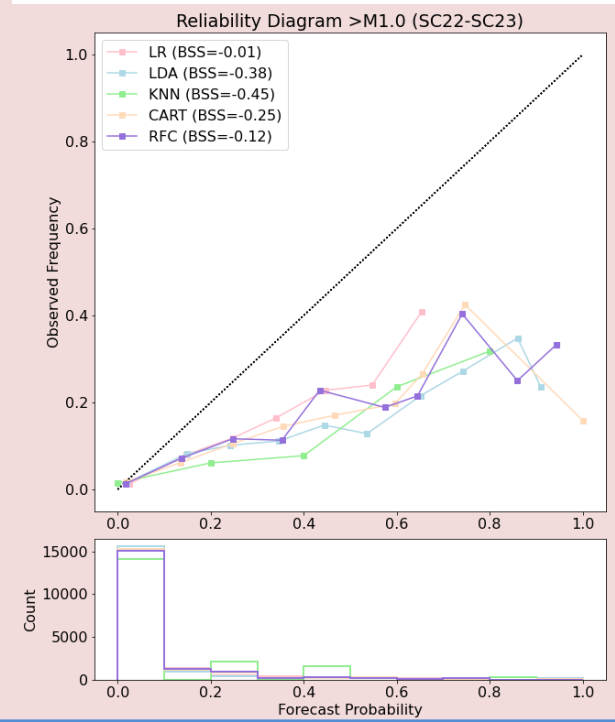
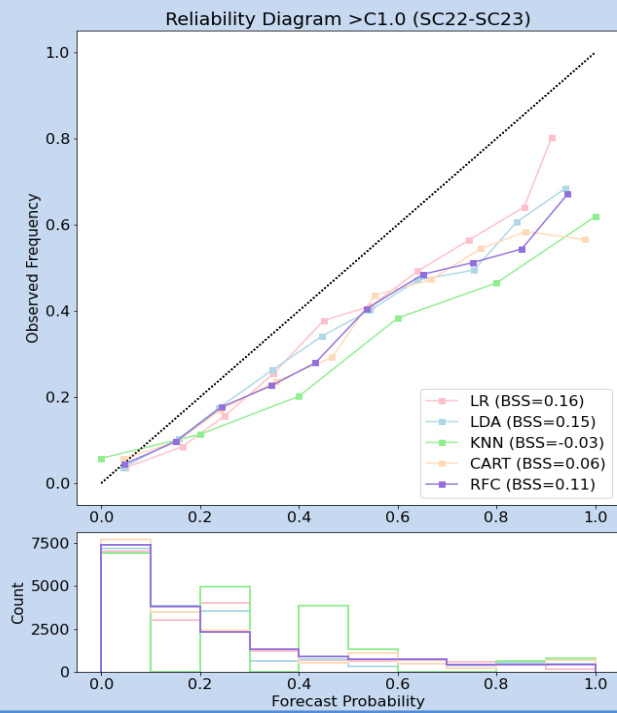
>C1.0 Flares

Reliability Diagrams Solar Cycle 22

>M1.0 Flares



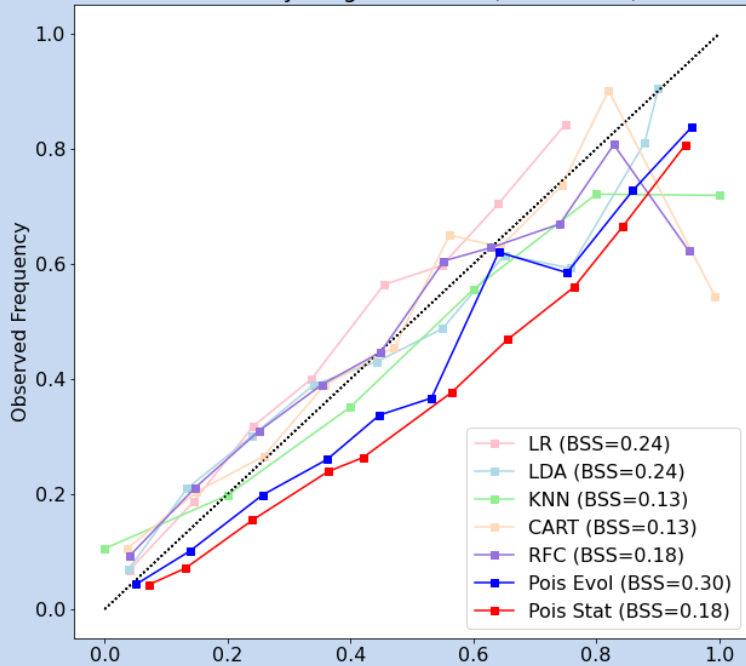
How reliable is the forecast compared to what we observe?



Reliability Diagrams Solar Cycle 23

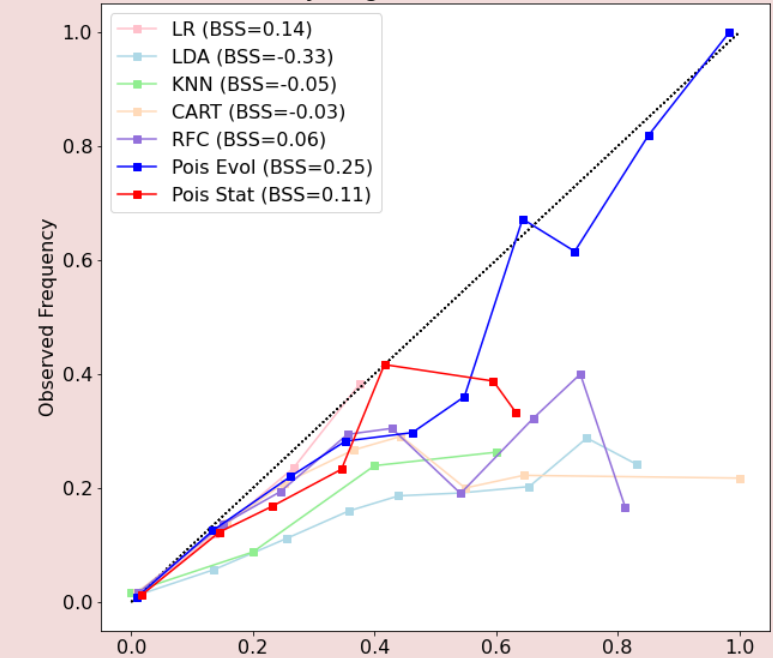
>C1.0 Flares

Reliability Diagram >C1.0 (SC23-SC24)

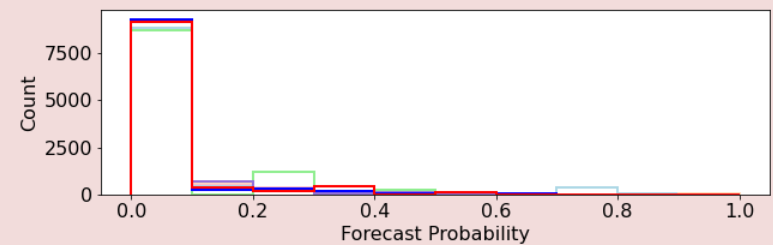
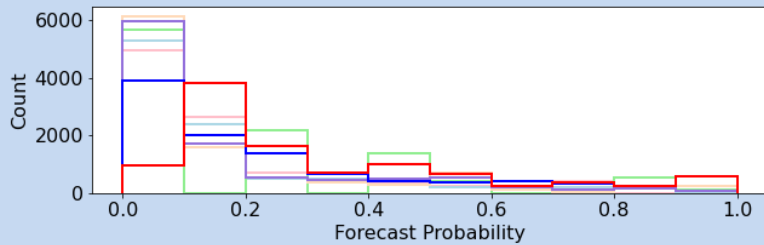


>M1.0 Flares

Reliability Diagram >M1.0 (SC23-SC24)



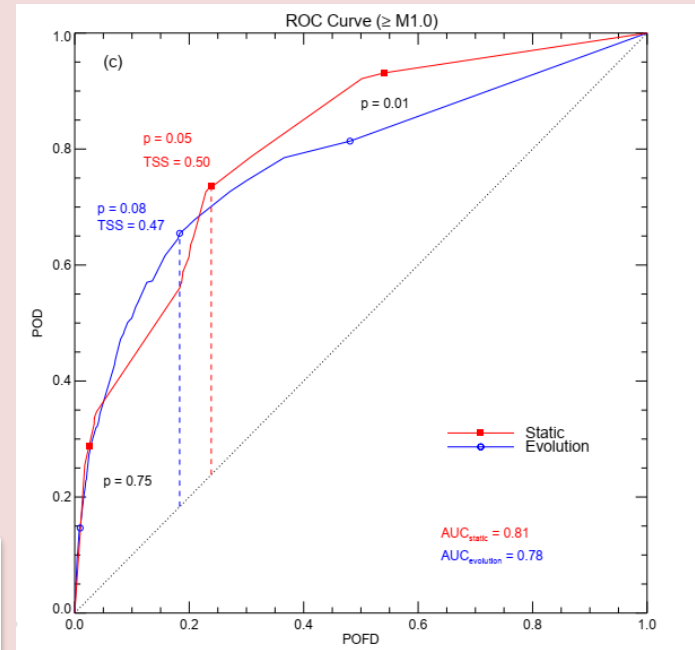
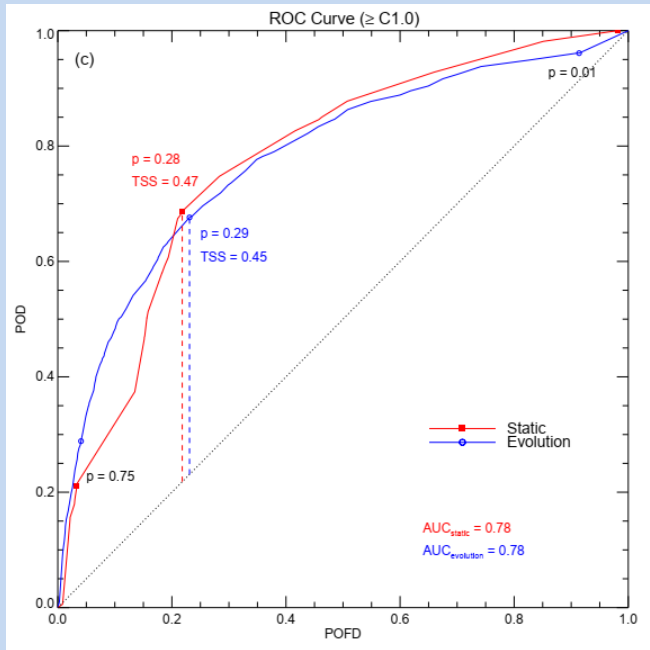
How reliable is the forecast compared to what we observe?



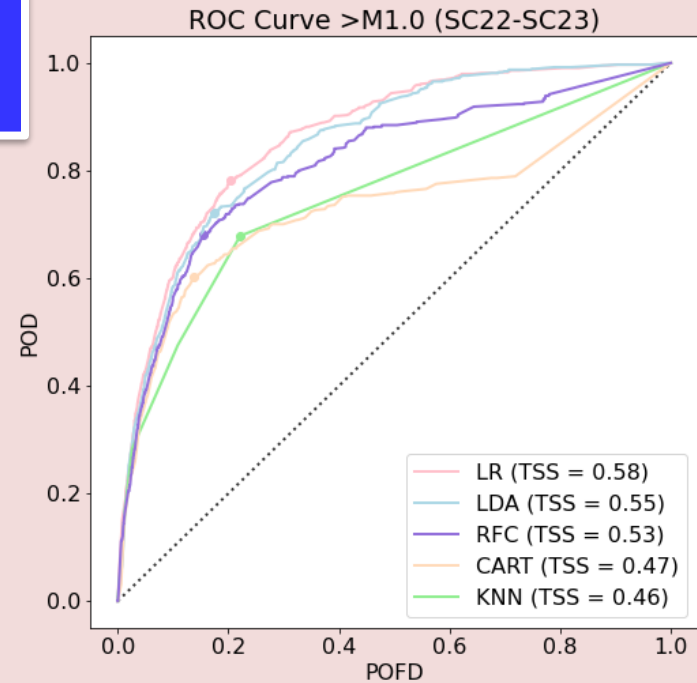
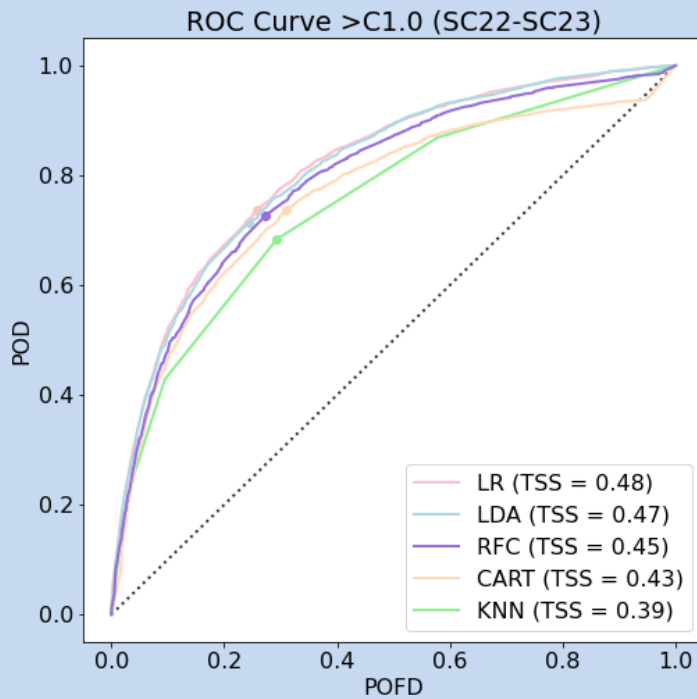
>C1.0 Flares

ROC Curves Solar Cycle 22

>M1.0 Flares



How well do the ML models perform classification? [Yes/No]

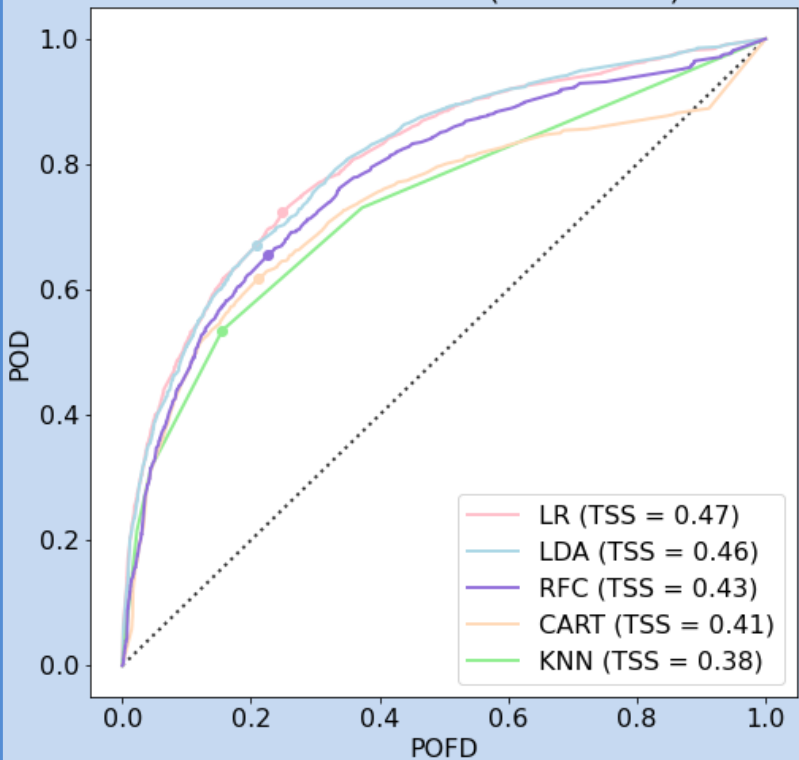


>C1.0 Flares

ROC Curves
Solar Cycle 23

>M1.0 Flares

ROC Curve >C1.0 (SC23-SC24)



How well do the
ML models
perform
classification?
[Yes/No]

ROC Curve >M1.0 (SC23-SC24)

